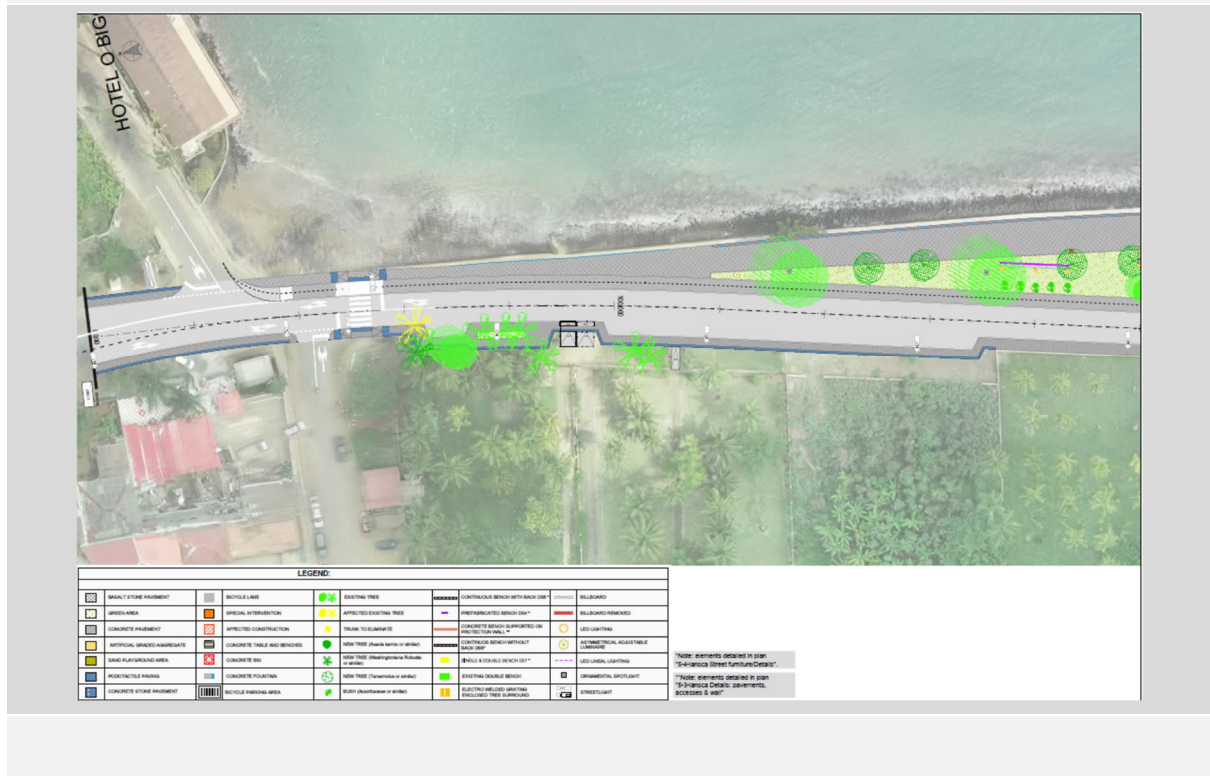


Lot 1 Lagarto Bay



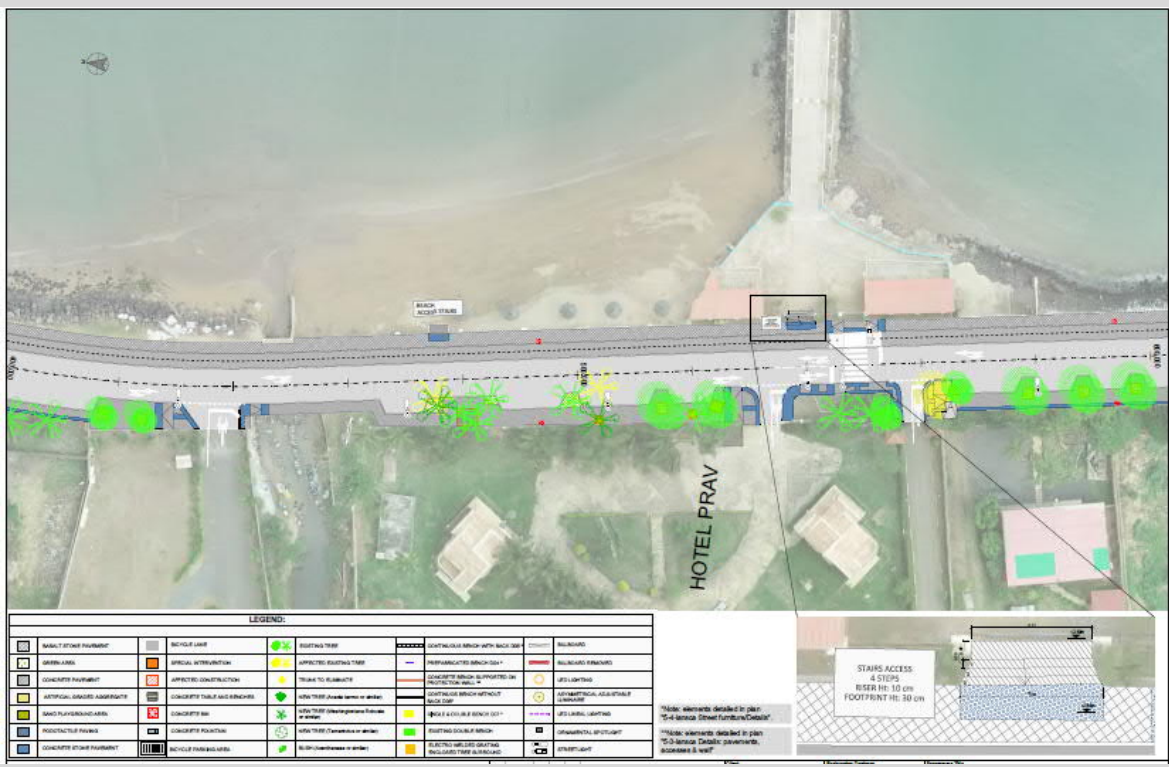
CH 0+070



TREES AFFECTED



CH 0+475



ESIA. Annex 3. Trees Affected

TREES AFFECTED



CH 0+505



LEGEND:

STAIRS ACCESS:
4 STOPS
RISER H: 10 cm
FOOTPRINT H: 30 cm

Note: elements detailed in plan
"1:4" detail shown furniture/Details"
Note: elements detailed in plan
"1:4" detail shown Details: pavement,
accessories & wall

ESIA. Annex 3. Trees Affected

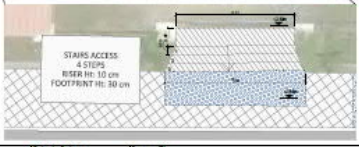
TREES AFFECTED



CH 0+560



LEGEND:



ESIA. Annex 3. Trees Affected

TREES AFFECTED



CH 1+140



LEGEND:											
	ROADWAY		RIGHT-OF-WAY		EXISTING TREE		PROPOSED ROADWAY		PROPOSED ROADWAY		PROPOSED ROADWAY
	SPECIAL INTERVENTION		AFFECTED EXISTING TREE		TREE TO BE SAVED		PROPOSED ROADWAY		PROPOSED ROADWAY		PROPOSED ROADWAY
	AFFECTED CONSTRUCTION		TREE TO BE SAVED IN DETAIL		PROPOSED ROADWAY		PROPOSED ROADWAY		PROPOSED ROADWAY		PROPOSED ROADWAY
	PROPOSED ROADWAY		PROPOSED ROADWAY		PROPOSED ROADWAY		PROPOSED ROADWAY		PROPOSED ROADWAY		PROPOSED ROADWAY

ESIA. Annex 3. Trees Affected

TREES AFFECTED



CH 1+640



LEGEND:

*Note: elements detailed in plan: "To be Salvaged Existing Concrete" *Note: elements detailed in plan: "To be Salvaged Existing Concrete" *Note: elements detailed in plan: "To be Salvaged Existing Concrete"

ESIA. Annex 3. Trees Affected

TREES AFFECTED



CH 1+730

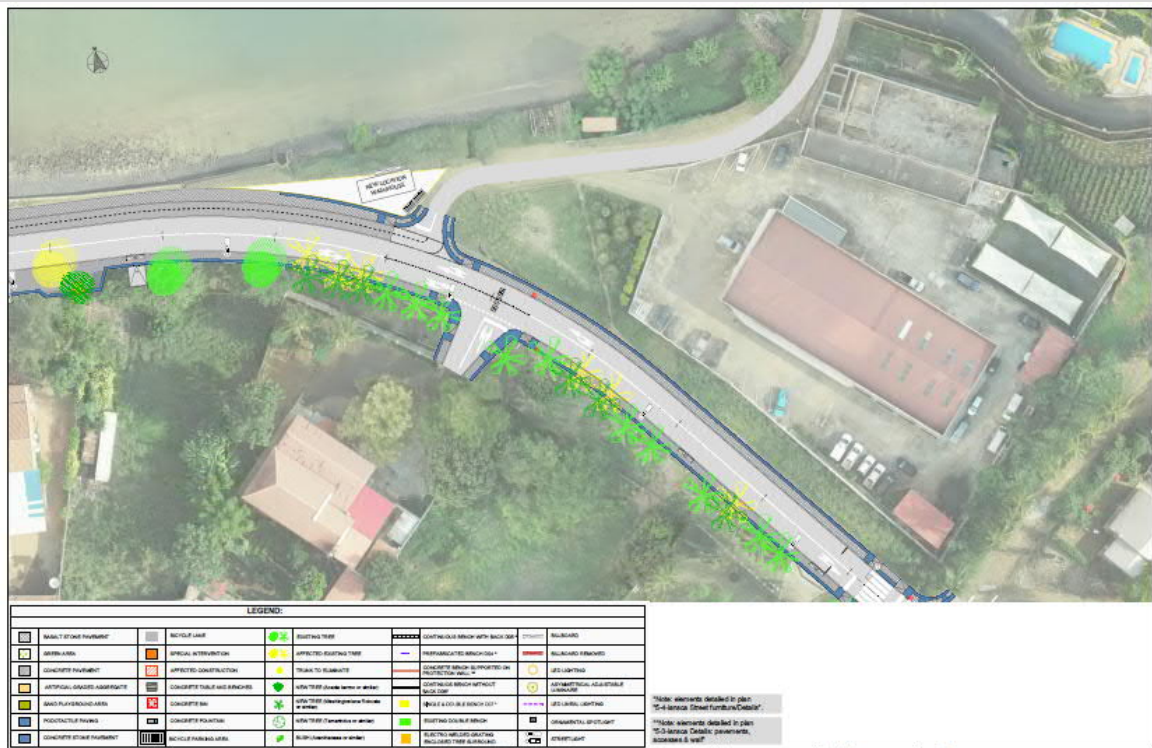


LEGEND:					

TREES AFFECTED



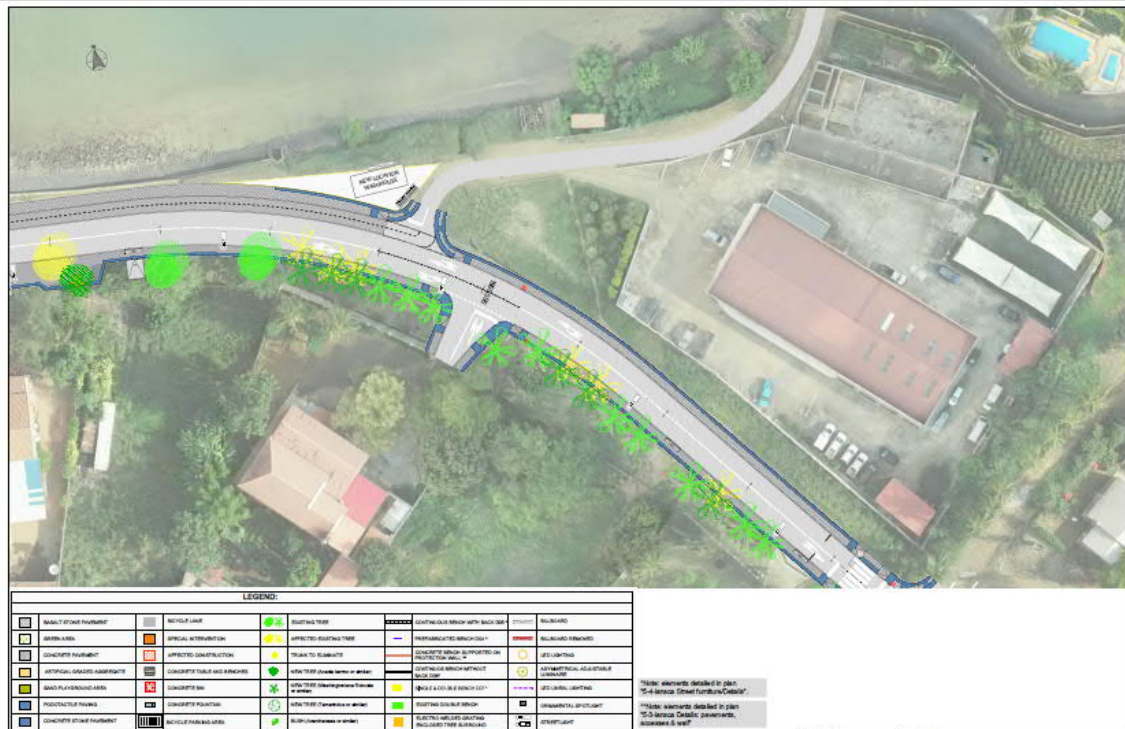
CH 1+860 to 1+880



TREES AFFECTED



CH 1+920

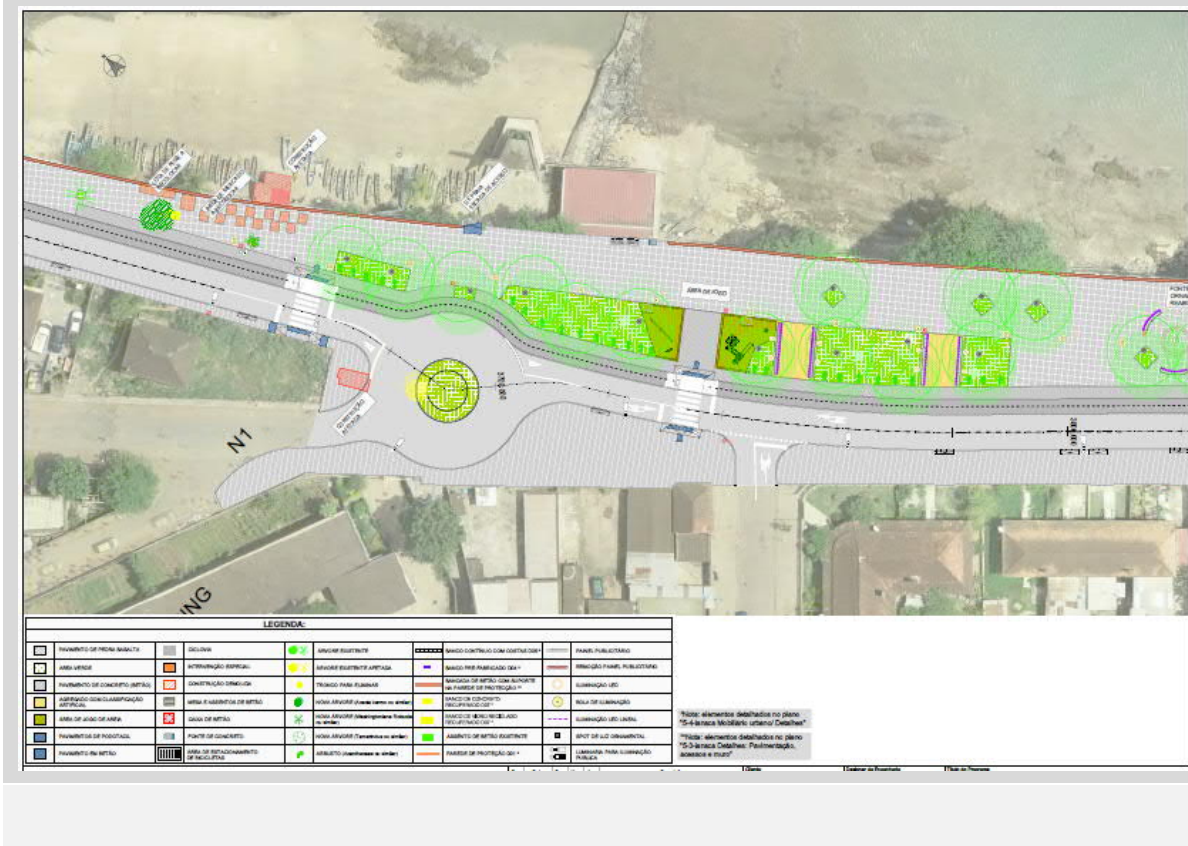


Lot 2 Ana Chaves Bay

TREES AFFECTED



CH 3+690

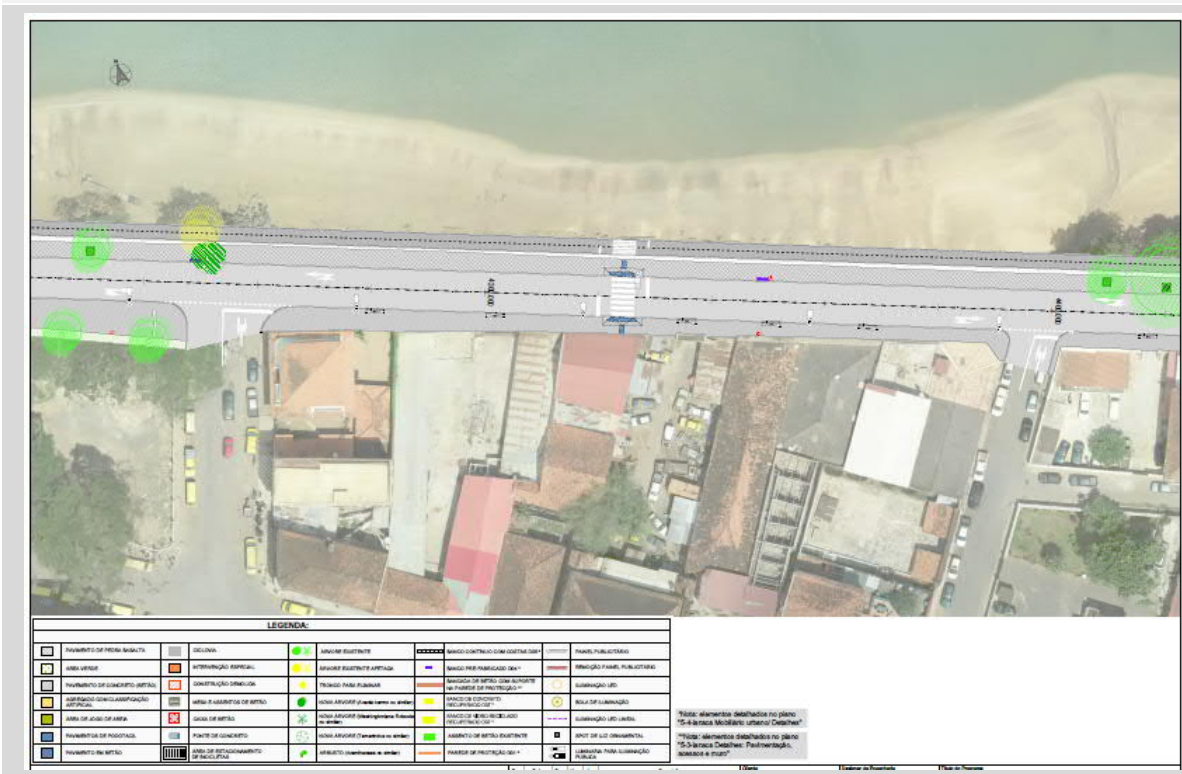


ESIA. Annex 3. Trees Affected

TREES AFFECTED



CH 4+250

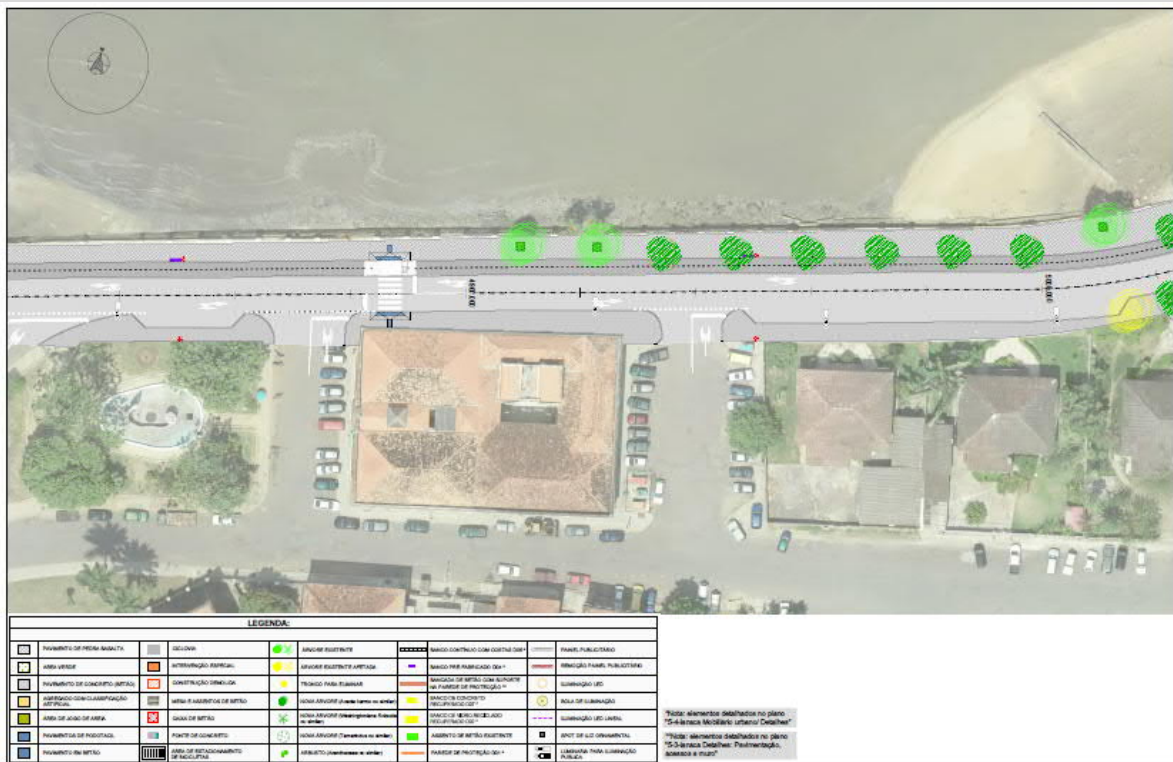


ESIA. Annex 3. Trees Affected

TREES AFFECTED



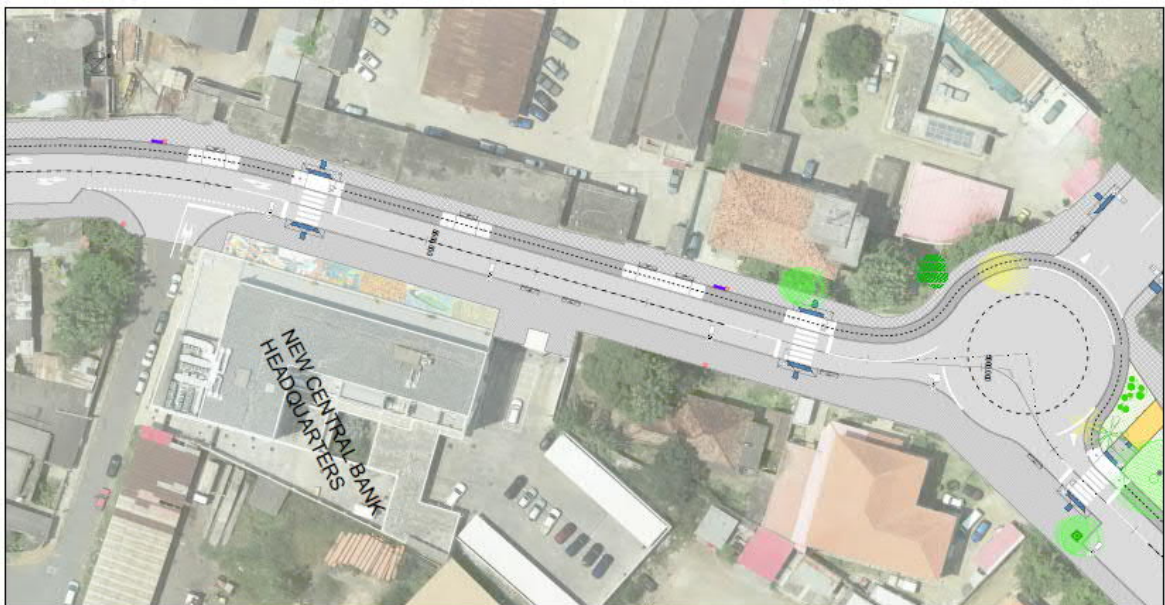
CH 5+010



TREES AFFECTED



CH 5+600



LEGENDA:

Pavimento de pedra/lajeado	Seção	Arvore existente	Muro/Graffiti ou sinalização	Muro/Pedestaleiro
Árvore isolada	Intervenção especial	Arvore existente afetada	Serviço (sem publicação) 20+1	Ruação/Tramvia/Passatempo
Pavimento de concreto/Asfalto	Delineamento/Definição	Projeto para instalação	Sinalização de trânsito (sem publicação) ou pintura de rotatória	Luminaria LED
Armazenamento/transporte/materiais	Área e Assinatura de Projeto	Área afetada (sem área de estoque)	Sinal de trânsito (sem publicação)	Nota de sinalização
Área de armazenamento	Caixa de Projeto	Área afetada (sem estoque/estabelecimento)	Sinal de trânsito (sem publicação) ou pintura de	Sinalização LED (onda)
Pavimento de pedregal	Ponto de concreto	Área afetada (sem estoque ou estoque)	Sinal de trânsito existente	Bóveda de luz (sombrilhete)
Pavimento Asfalto	Área de desenvolvimento de infraestrutura	Área afetada (sem estoque ou estoque)	Projeto de Instalação 20+1	Borda de L.O. (sombrilhete)
		Projeto (comerciais e áreas)	Projeto de Instalação 20+1	Luminária para iluminação pública

*Nota: Alterações detalhadas no plano "5-4-Brasão Mobilidade Urbana de Cuiabá"
**Nota: Alterações detalhadas no plano "5-3-Brasão Cidadania, Participação, Saúde e Meio"

Lot 2 Pantufo Coastal

TREES AFFECTED



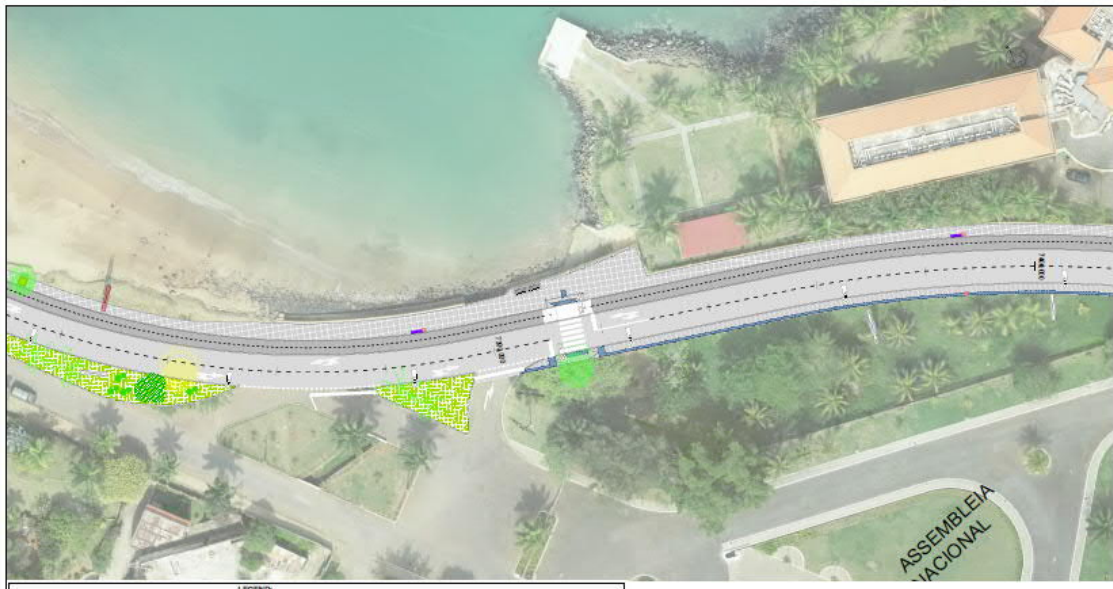
CH 6+460



TREES AFFECTED



CH 7+240



LEGEND					
[Symbol]	ROADWAY FURNITURE	[Symbol]	CONCRETE POAVLATION	[Symbol]	CONCRETE POAVLATION
[Symbol]	CONCRETE POAVLATION	[Symbol]	CONCRETE POAVLATION	[Symbol]	CONCRETE POAVLATION
[Symbol]	CONCRETE POAVLATION	[Symbol]	CONCRETE POAVLATION	[Symbol]	CONCRETE POAVLATION
[Symbol]	CONCRETE POAVLATION	[Symbol]	CONCRETE POAVLATION	[Symbol]	CONCRETE POAVLATION
[Symbol]	CONCRETE POAVLATION	[Symbol]	CONCRETE POAVLATION	[Symbol]	CONCRETE POAVLATION
[Symbol]	CONCRETE POAVLATION	[Symbol]	CONCRETE POAVLATION	[Symbol]	CONCRETE POAVLATION
[Symbol]	CONCRETE POAVLATION	[Symbol]	CONCRETE POAVLATION	[Symbol]	CONCRETE POAVLATION
[Symbol]	CONCRETE POAVLATION	[Symbol]	CONCRETE POAVLATION	[Symbol]	CONCRETE POAVLATION
[Symbol]	CONCRETE POAVLATION	[Symbol]	CONCRETE POAVLATION	[Symbol]	CONCRETE POAVLATION

*Rocks elements included in plan
 **Rocks elements detailed in plan
 ***Rocks elements detailed in plan
 ****Rocks elements detailed in plan
 *****Rocks elements detailed in plan