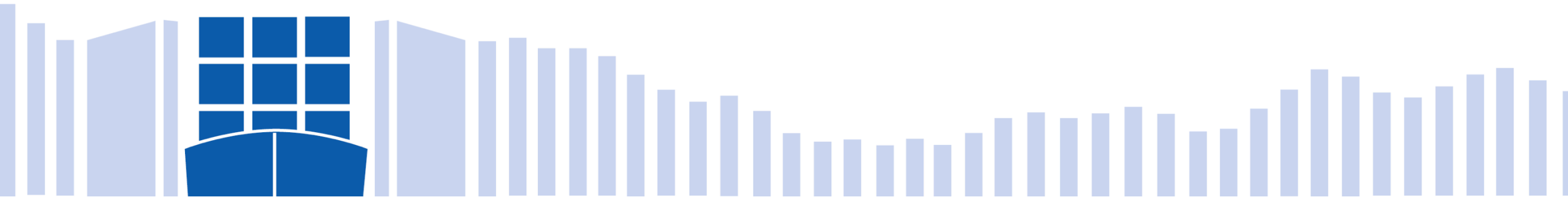


— INAUGURATIONS —

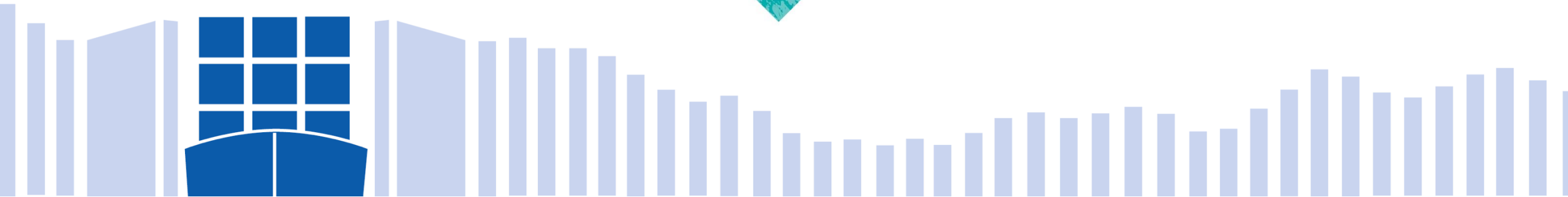
of the 4th LANAYE LOCK and
LIEGE TRILOGIPORT

November 13, 2015

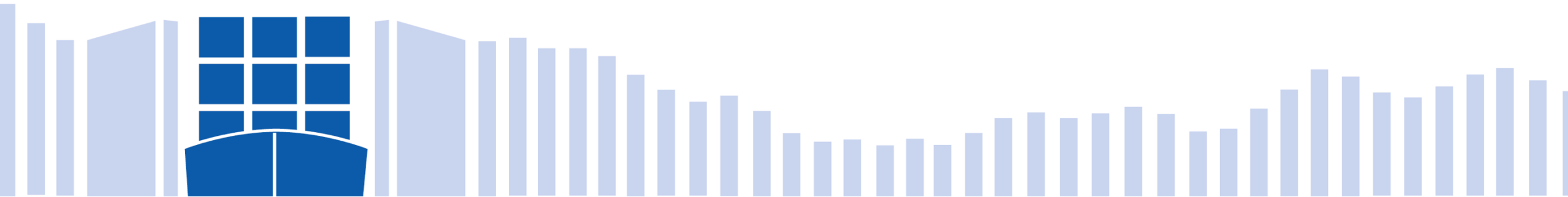
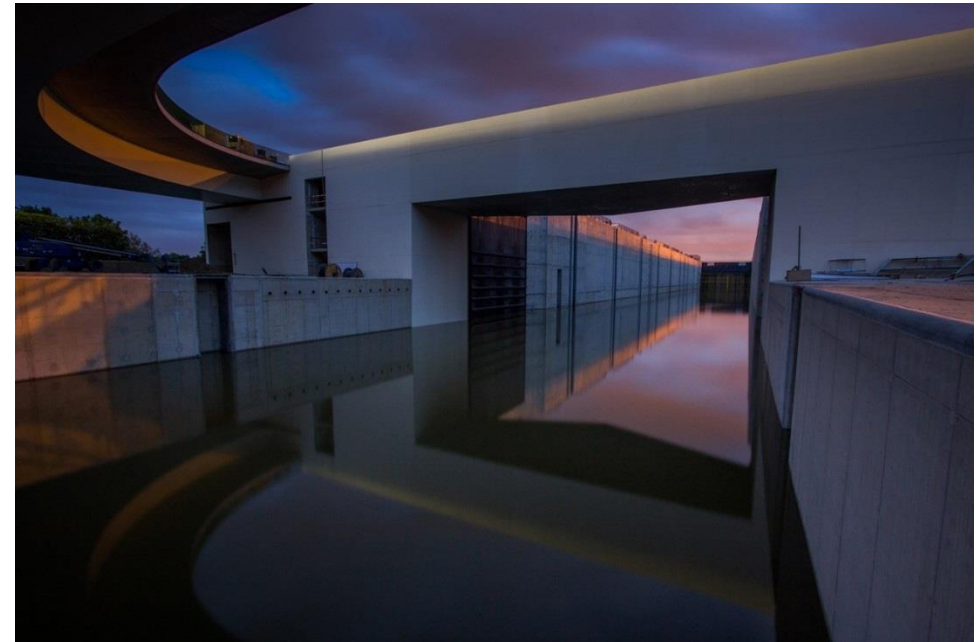


Raymond LANGENDRIES

President of SOFICO

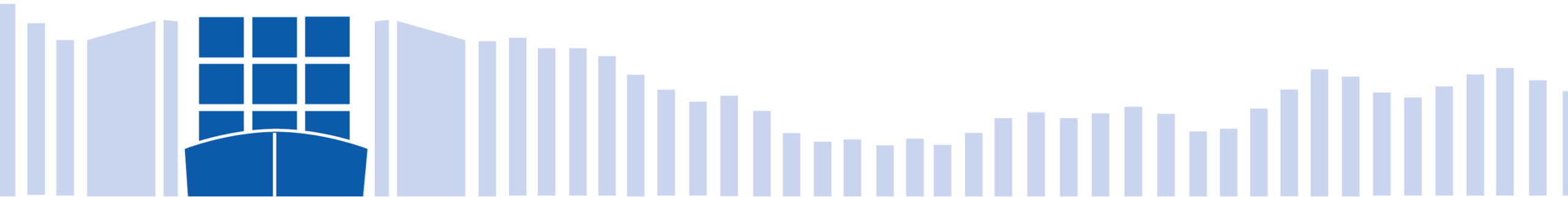
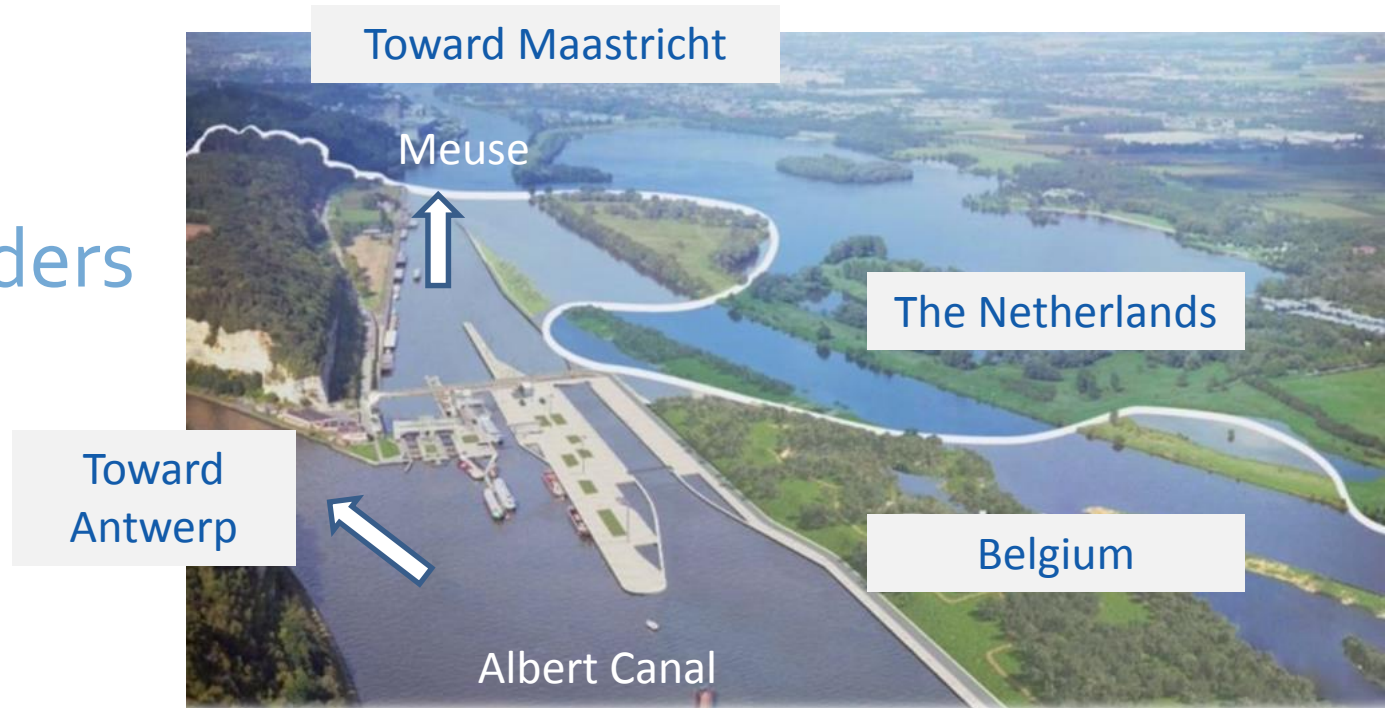


The 4th LANAYE LOCK



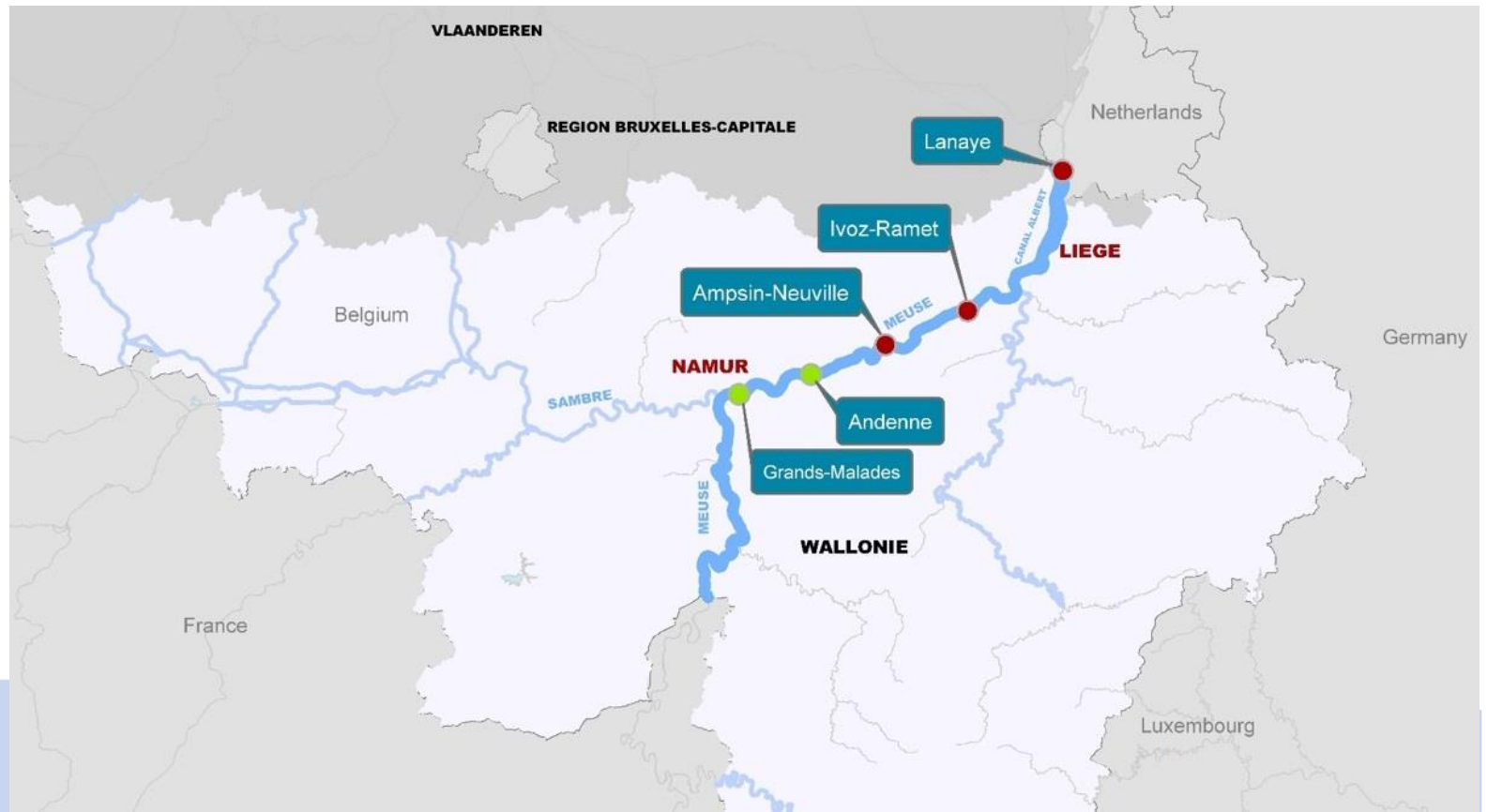
Contextualisation

- Strategic crossroad between Wallonia, Flanders and the Netherlands



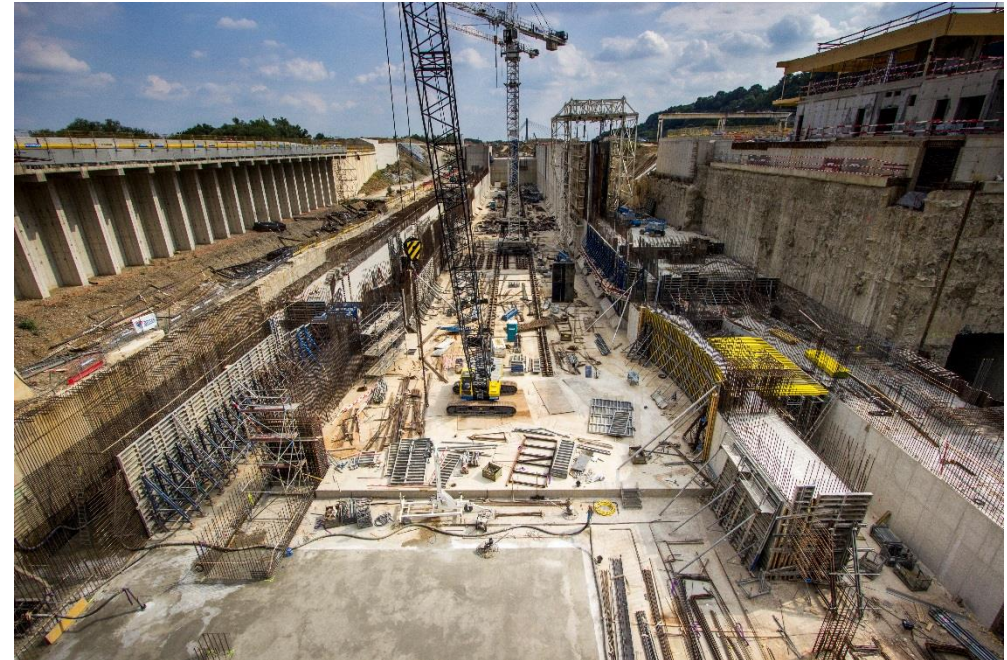
Contextualisation

- Trans-European Transport network (TEN-T) Rhine/Meuse-Main-Danube
- Missing link since 1996



Key dates

1994 and 2001:	Statements of intention Wallonia-Netherlands
June 30, 2011:	Start of work
Augustus 17, 2015:	Trial phase
November 13, 2015:	Inauguration



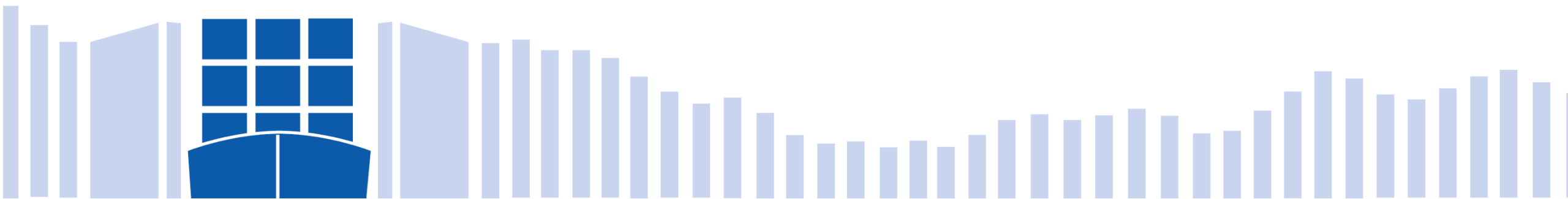
Funding

Total cost = **150 millions €** (VAT excluded)

- 28 millions €  Co-financed by the European Union
Trans-European Transport Network (TEN-T)

- 10 millions € 

- Remaining balance financed by **SOFICO** with a loan from  **European Investment Bank** *The EU bank*



The 4th LANAYE LOCK

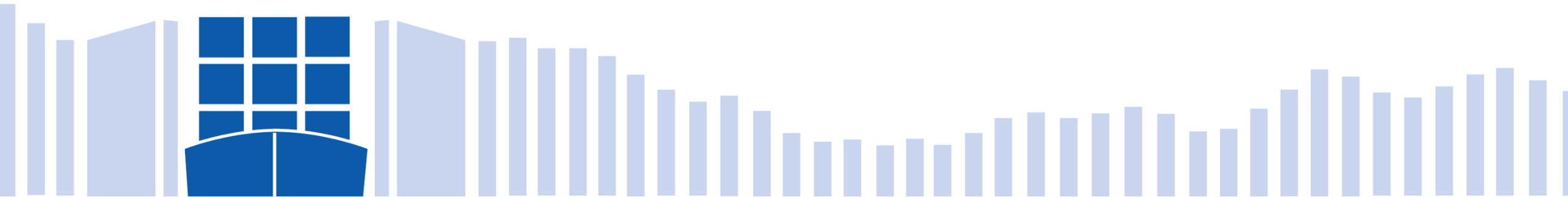


Co-financed by the European Union
Trans-European Transport Network (TEN-T)



**European
Investment
Bank**

The EU bank



The 4th LANAYE LOCK



SM LANECLUSE 4 :



SM GREISCH-SNC LAVALIN :



INAUGURATIONS of the 4th LANAYE LOCK and LIEGE TRILOGIPOINT



Jacques HACOURT

Inspecteur général des Ponts et Chaussées

Service Public de Wallonie
Direction Générale Opérationnelle Mobilité et Voies hydrauliques



Wallonie



Service public
de Wallonie

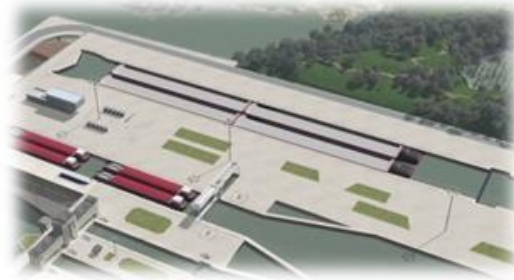


Site avant travaux

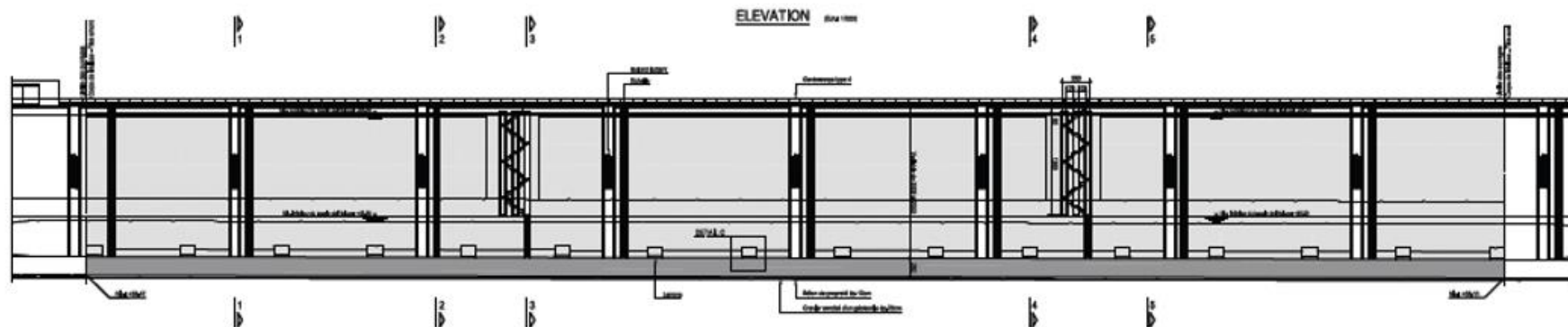
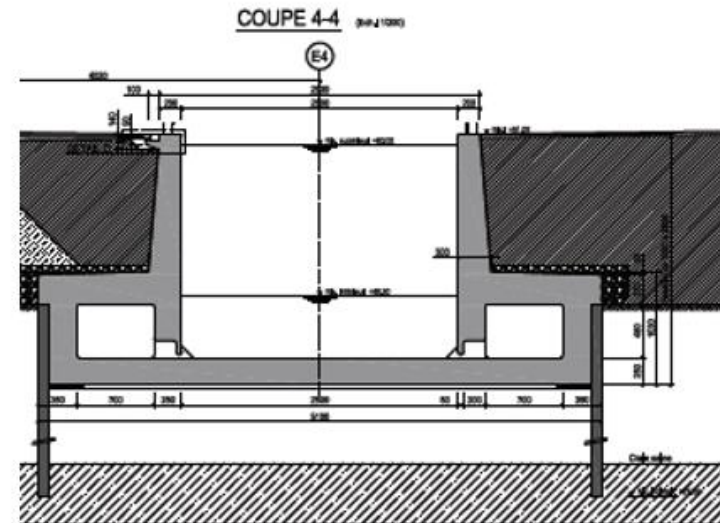
- 2 petites écluses de 55 X 7,5m
(600 tonnes chacune)
- 1 écluse 136 m x 16 m
(2.000 tonnes)



Nouvelle écluse de 9.000 tonnes

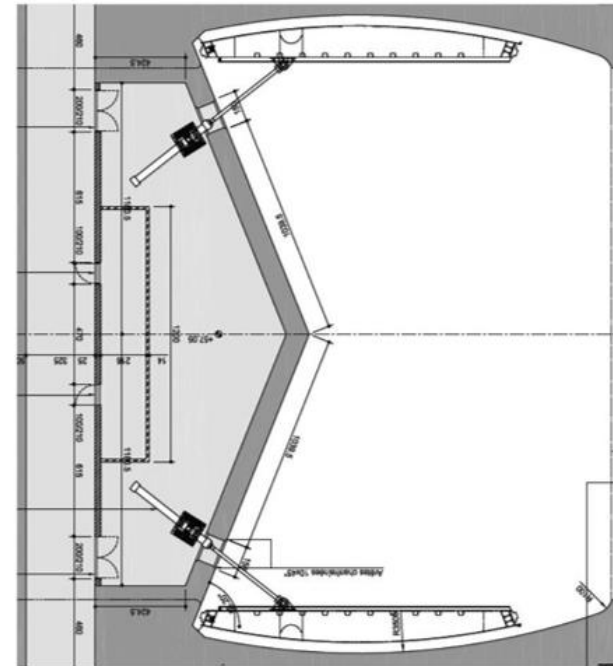
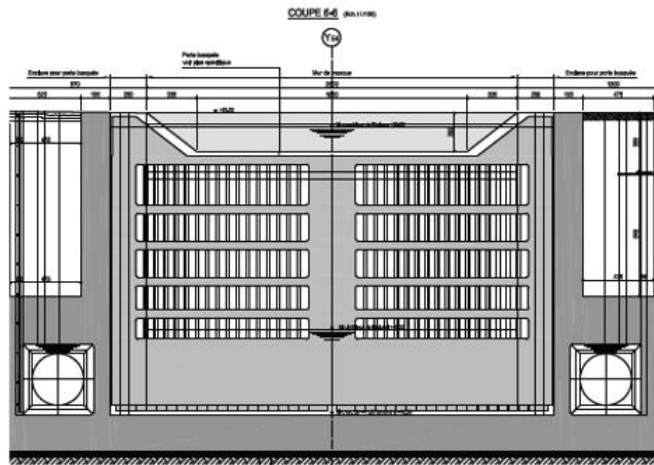
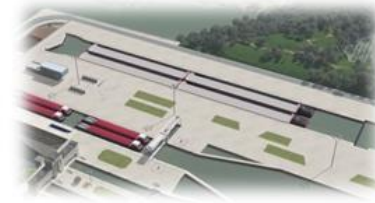


- **Sas : 225m x 25m**
- **Chute nominale de 13.68 m**
- **Epaisseur des parois varie de 2 à 3 m**

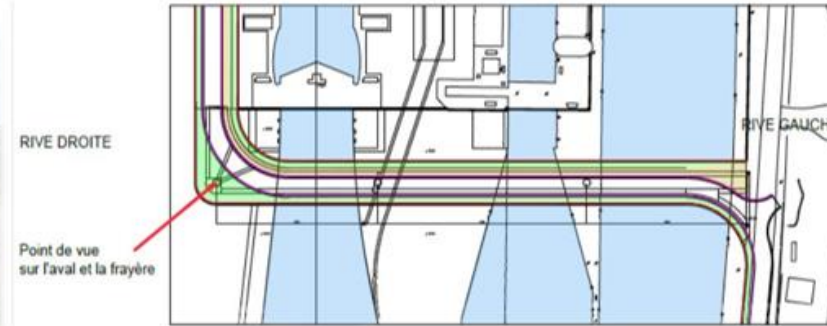


Nouvelle écluse-porte aval busquée

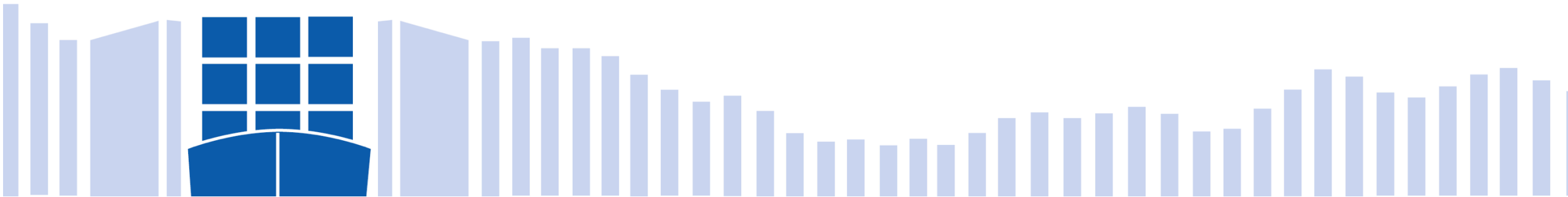
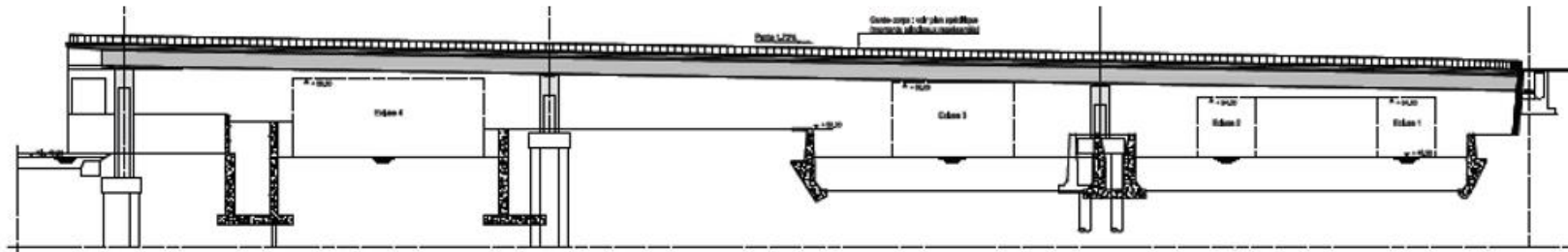
- Dimensions : 15.14 m x 16.9 m x 1.5 m
- Poids : 2 x 115 T d'acier
- Manoeuvre par vérins à attaque directe implantés dans le mur de masque



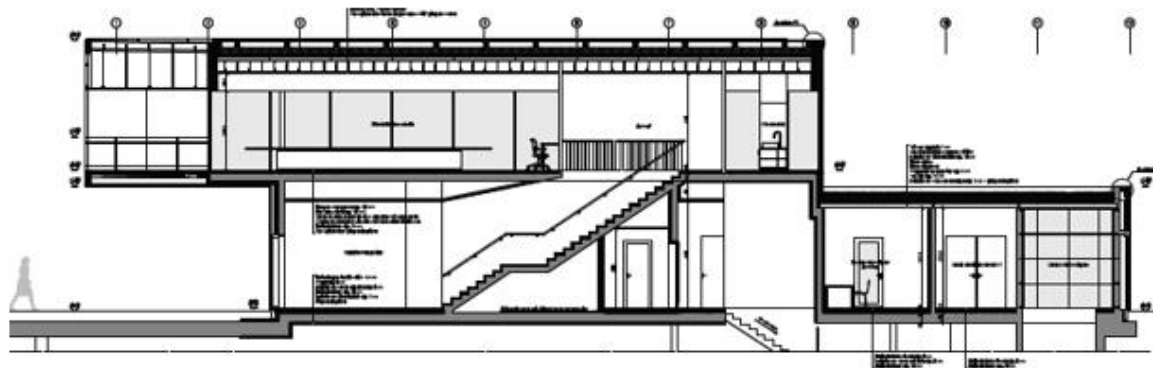
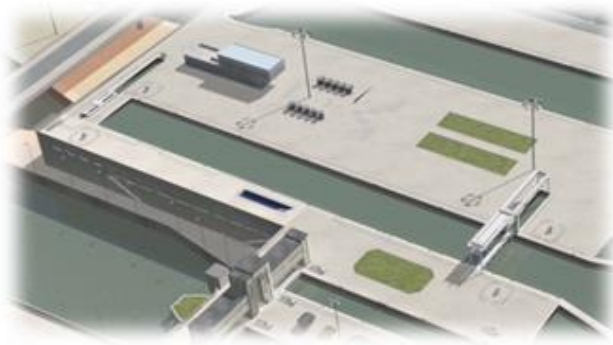
Nouveau pont



- longueur : 191 m
- pente : 1,72 %

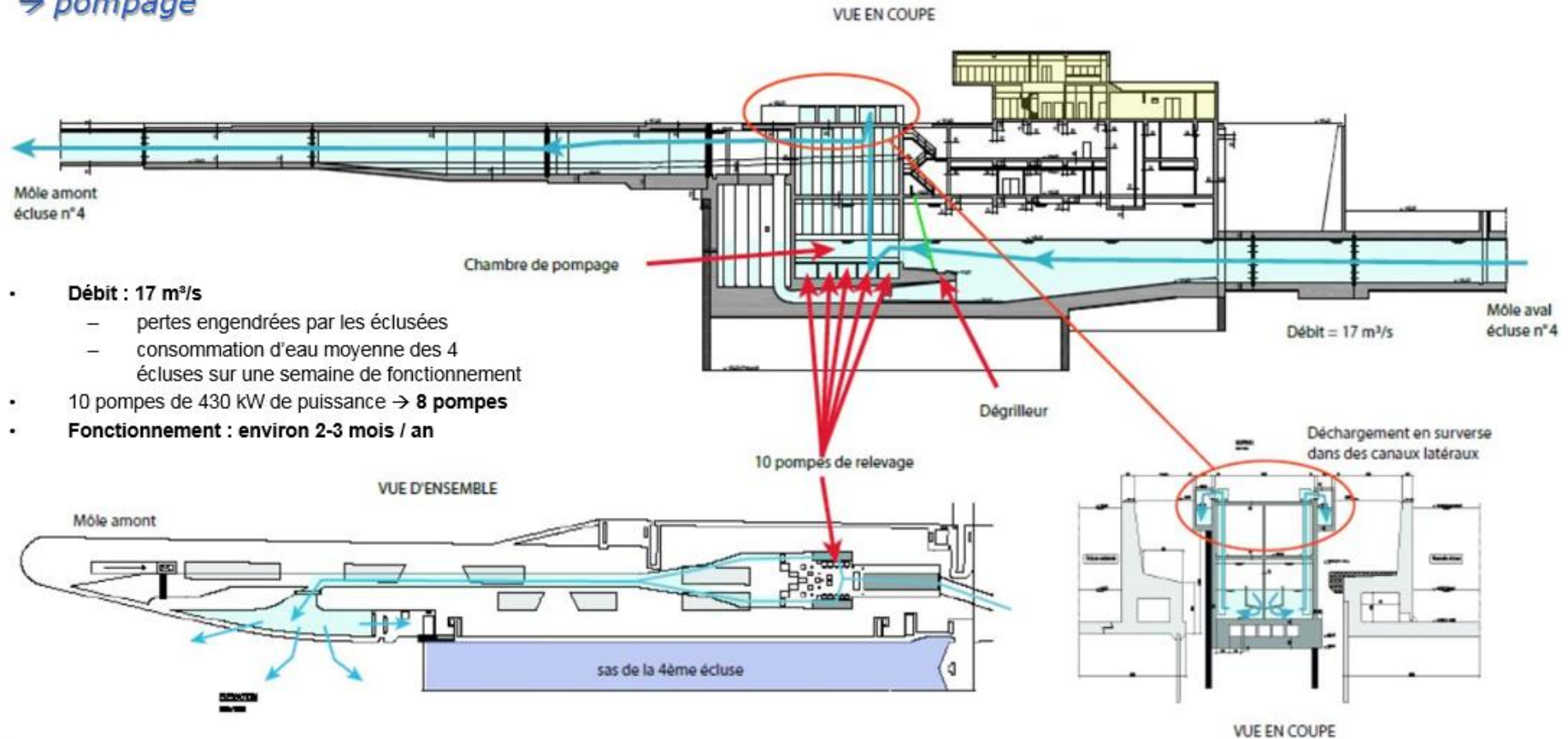


Poste de commande unique pour le complexe

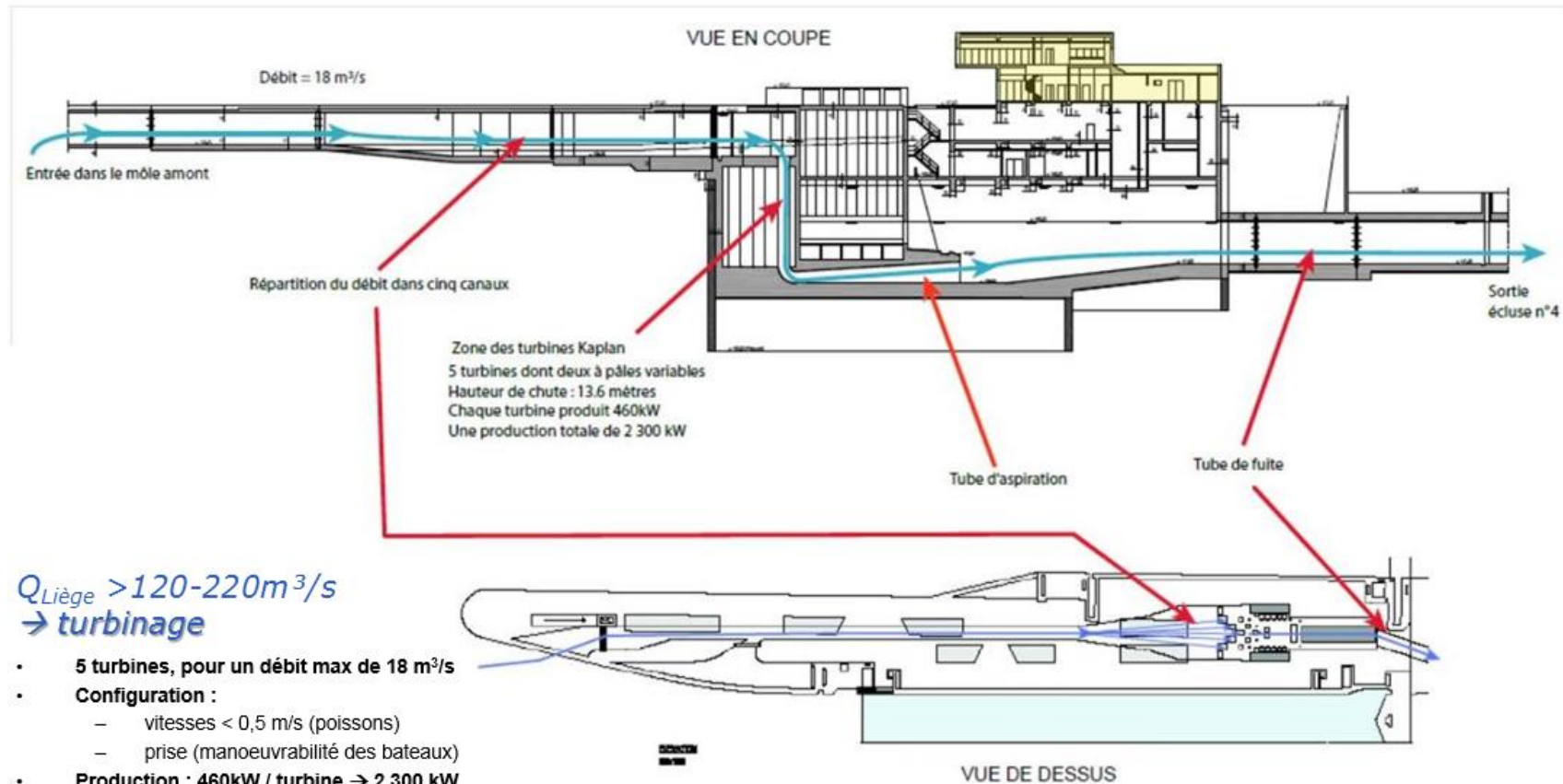


Une station de pompage...

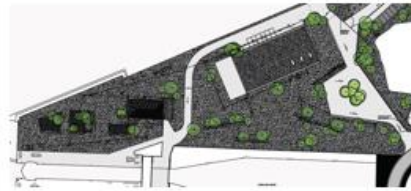
$Q_{Lixhe} < 50 m^3/s$
→ **pompage**



... couplée à une centrale hydroélectrique



Mesures compensatoires écologiques de qualité



Horeca



Pietersplas



Aménagements paysagers
Extension frayère



Perré de Lanaye



Gravière de Nivelles



Travaux de rénovation: portiques des anciennes écluses, maisons éclusières, etc



— INAUGURATIONS —

of the 4th LANAYE LOCK and
LIEGE TRILOGIPIORT

THANK YOU

