

GORDONBUSH WINDFARM

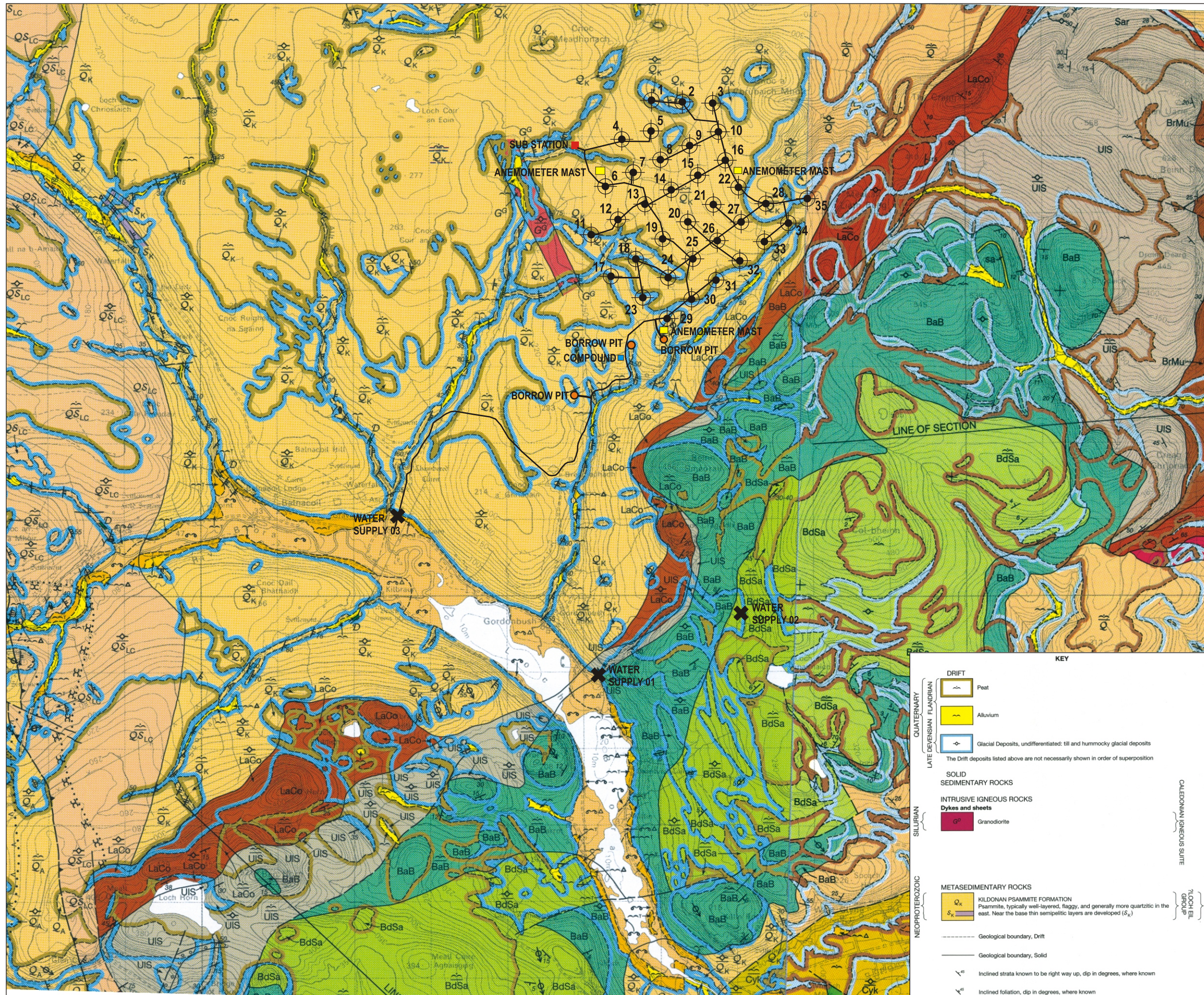
Scottish and Southern Energy plc

SOLID & DRIFT GEOLOGY MAP (BGS,1998)

Key:

- Site Boundary
- Turbine
- Access Track

Scale 1:50,000



KEY

DRIFT		Peat
		Alluvium
		Glacial Deposits, undifferentiated: till and hummocky glacial deposits
<small>The Drift deposits listed above are not necessarily shown in order of superposition</small>		
SOLID SEDIMENTARY ROCKS		
INTRUSIVE IGNEOUS ROCKS		
Dykes and sheets		
		Granodiorite
NEOPROTEROZOIC		
METASEDIMENTARY ROCKS		
		KILDONAN PSAMMITE FORMATION Psammite, typically well-layered, flaggy, and generally more quartzitic in the east. Near the base thin semipelite layers are developed (S _k)
		Geological boundary, Drift
		Geological boundary, Solid
		Inclined strata known to be right way up, dip in degrees, where known
		Inclined foliation, dip in degrees, where known

Figure 14.1