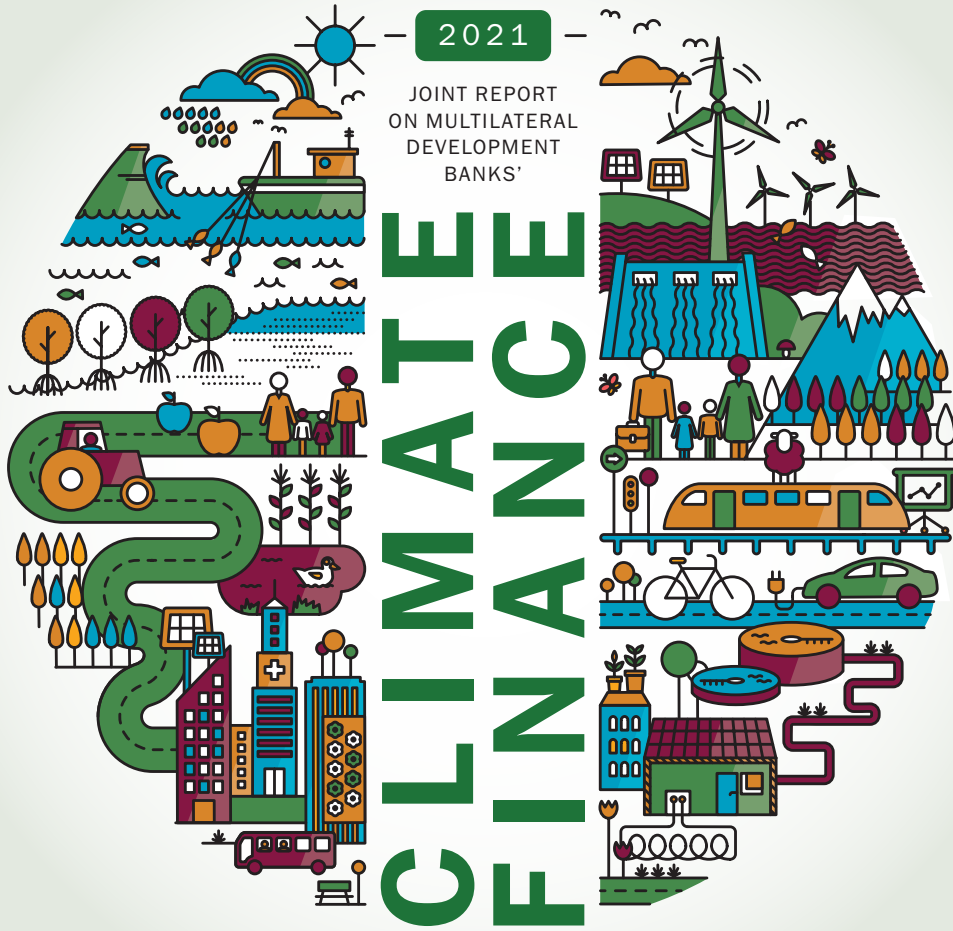


EXTRACT OF

2021

JOINT REPORT
ON MULTILATERAL
DEVELOPMENT
BANKS'



JOINT METHODOLOGY FOR TRACKING
**CLIMATE CHANGE
ADAPTATION
FINANCE**



EXTRACT OF

— 2021 —

JOINT REPORT ON MULTILATERAL
DEVELOPMENT BANKS'

CLIMATE FINANCE

JOINT METHODOLOGY FOR TRACKING

CLIMATE CHANGE ADAPTATION FINANCE

Joint methodology for tracking climate change adaptation finance

© European Investment Bank, 2022.

All rights reserved.

All questions on rights and licensing should be addressed to publications@eib.org

For further information on the EIB's activities, please consult our website, www.eib.org.

You can also contact our info Desk, info@eib.org.

Published by the European Investment Bank.

Printed on FSC® Paper.

I. BACKGROUND AND GUIDING PRINCIPLES

1. Climate resilience and adaptation are intrinsically linked to development. This makes it challenging to accurately estimate adaptation finance in development operations. In response to this challenge, the joint MDB Working Group on Climate Finance Tracking developed a common adaptation finance tracking methodology in 2012.¹ This common methodology has been applied to assessing and reporting multilateral development bank (MDB) finance directed to specific adaptation activities² that are carried out in response to experienced and anticipated climate change impacts.
2. The methodology takes a context-specific, granular and conservative approach to reduce the scope for over-reporting of adaptation finance. The MDB adaptation finance tracking methodology requires project activities that contribute to adaptation to be disaggregated from activities that do not.
3. The joint MDB methodology seeks to identify the links between adaptation activities and the project's explicit intent to reduce vulnerability to climate change. Only activities that directly address climate change vulnerability are considered when estimating the adaptation finance. This means that the volume of MDB-reported adaptation finance is an estimate of the finance associated with specific project activities that contribute to adapting to climate change.
4. Multilateral development banks and members of the International Development Finance Club (IDFC) have been working together to improve the harmonisation, comparability and transparency of the climate finance they report. As a result of these joint efforts, the multilateral development banks and members of the IDFC agreed on the [Common Principles for Climate Change Adaptation Finance Tracking](#) in July 2015. The principles establish the parameters with which to identify and estimate the volume of adaptation finance in MDB and IDFC operations. They also form the basis for further joint work to increase the comparability of reported figures on climate adaptation finance and to harmonise key concepts related to reporting guidelines and processes.
5. Between 2021 and 2022, the MDBs carried out a review of the joint MDB methodology for tracking adaptation finance, while continuing to apply both the methodology and the joint MDB-IDFC principles. The review built on collective experiences of applying the methodology over the preceding decade.³ It aimed to better characterise adaptation activities for the purpose of tracking adaptation finance, and to provide guidance on the application of the joint methodology in a broader range of financing instruments.
6. The outcome was an update to the methodology that reflected the evolving understanding of adaptation and climate resilience and advances made in the fields of adaptation finance. These developments include the following:
 - a. Adaptation is no longer viewed purely as an add-on to development investments, but rather as an imperative for putting development on the path to resilience. As a result, adaptation support has expanded from traditional infrastructure sectors to a wider range of sectors, such as education, health, social protection, financial services, and research and innovation for adaptation solutions.
 - b. Financing modalities supporting adaptation have broadened from the typical investment loans and programmes to other financial instruments, including policy-based loans, working capital and credit lines (see Figure 1).

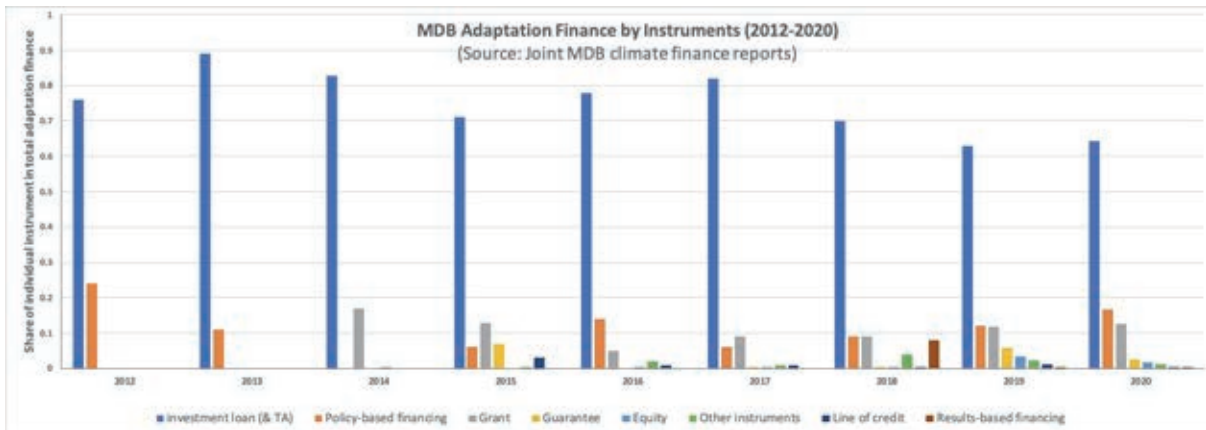
1 See Section 2.3 of the Joint MDB report on climate finance 2013 and subsequent joint MDB reports for details of the common MDB methodology.

2 Under this methodology, "activities" should be understood as projects, project components, or elements or proportions of projects.

3 Lessons learned from the implementation of the common principles are available at a joint MDB-IDFC report.

- c. Relevant advances concerning green and sustainable finance have emerged in recent years, notably the [EU taxonomy for sustainable finance](#) and [impact reporting for green bonds](#), introducing new concepts and approaches for better defining, reporting and monitoring adaptation activities, including private investment in adaptation.

Figure 1: MDB adaptation finance by instrument (2012-2020)



Note: Other instruments include advisory services and bonds. Some MDBs report eligible bonds under the category of investment loans.

In addition to these developments, multilateral development banks are committed to making their operations consistent with a pathway towards low-carbon and climate-resilient development, in line with the goals of the Paris Agreement.⁴ Assessing the alignment to the Paris Agreement and tracking adaptation finance are clearly linked, while serving different purposes. Multilateral development banks have developed a [joint methodology to assess the alignment of their operation to the Paris Agreement](#). This assessment is applied at the project level and provides an effective filter to ensure that MDB financing causes no significant harm to the abilities of communities, economic activities and the environment to cope with physical climate risks. The adaptation finance tracking methodology provides guidance for estimating the finance associated with the filtered projects supporting communities, economic activities and the environment to adapt to a changing climate.

7. The multilateral development banks will continue to work together to enhance approaches to tracking adaptation finance and support advances in this area. They will also continue to work on the development of metrics that can adequately capture the effectiveness of the adaptation activities financed through their operations, building on experience and jointly developed initial frameworks.⁵
8. This annex describes the updated MDB methodology for tracking adaptation finance, clarifying the types of activities that can contribute to adaptation. As before, the methodology is based on a three-step process required to identify adaptation activities. The annex also clarifies how this process can be applied to a broader range of financial instruments and provides a few project examples.

⁴ As specified in Article 2.1(c) of the [Paris Agreement](#).

⁵ [A Framework and Principles for Climate Resilience Metrics in Financing Operations](#).

II. ACTIVITIES CONSIDERED FOR ADAPTATION FINANCE

9. The multilateral development banks have a wide variety of operations across different geographical regions, economies and financing instruments. As a result, adaptation finance tracking may take place across a range of activities categorised as follows (see Table 1):
- a. *Type 1/Activities that are adapted:* Activities that integrate measures to manage physical climate risks and ensure that the project's intended objectives are realised despite these risks. These activities include adjustments or improvements required to ensure that the project performs well against experienced and anticipated impacts of climate change. Adaptation is not the primary objective of the activity.
 - b. *Type 2/Activities that have shared objectives of adaptation and development:* Activities that directly reduce physical climate risk and build the adaptive capacity of the system within which the activity takes place.⁶ These activities are typically identified based on a robust understanding of physical climate risks faced by the system within which the project takes place. These activities are themselves adjusted to cope with experienced and anticipated impacts of climate change. Adaptation is one of the objectives of the activity.
 - c. *Type 3/Activities that enable adaptation:* Activities that contribute to reducing the underlying causes of vulnerability to climate change at the systemic level and/or removing knowledge, capacity, technological and other barriers to adaptation. This type of activity supports adaptation beyond its immediate scope by creating enabling conditions for policy and regulatory environment developments, physical or natural asset enhancements, capacity strengthening, technology developments or knowledge enhancements. These activities are themselves adjusted to cope with the experienced and anticipated impacts of climate change. Adaptation is the primary objective of the activity.

Table 1. A summary and illustrative examples of the three types of adaptation activities

	ADAPTATION ACTIVITIES		
	Type 1	Type 2	Type 3
Description	Activities that integrate measures to manage physical climate risks and ensure that the project's intended objectives are realised despite these risks	Activities that directly reduce physical climate risk and build the adaptive capacity of the system within which the activity takes place	Activities that contribute to reducing the underlying causes of vulnerability to climate change at the systemic level and/or removing knowledge, capacity, technological and other barriers to adaptation
Objective	Activities that integrate measures to manage physical climate risks and ensure that the project's intended objectives are realised despite these risks	Activities that directly reduce physical climate risk and build the adaptive capacity of the system within which the activity takes place	Activities that contribute to reducing the underlying causes of vulnerability to climate change at the systemic level and/or removing knowledge, capacity, technological and other barriers to adaptation
Adaptation finance	Less than 100% of MDB finance on the activity	Less than 100% of MDB finance on the activity	100% of MDB finance on the activity

⁶ The system within which the activity takes place can include the project or programme it is part of, surrounding geographic areas and landscape, and/or the socioeconomic entities and groups benefiting from the project.

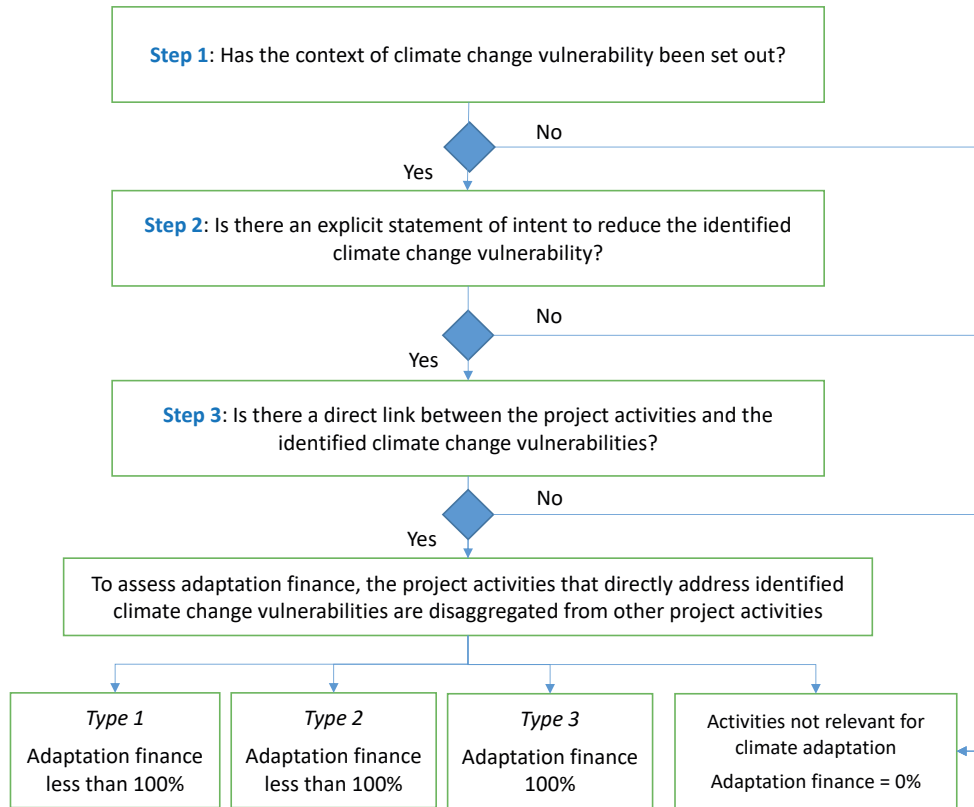
ADAPTATION ACTIVITIES			
	Type 1	Type 2	Type 3
Illustrative examples	<ul style="list-style-type: none"> Adjusted design of culverts required in a road project to cope with the increased risk of extreme rainfall and flooding Use of conductors with operating limits at higher temperature thresholds in a transmission line vulnerable to increased extreme temperatures 	<ul style="list-style-type: none"> Cash transfer activities for underserved and vulnerable communities to strengthen social protection and improve preparedness for and recovery from climate shocks Diversification of water sources needed in a city's water supply system to meet the increased demand of a growing population and to reduce risks to the water supply system resulting from droughts 	<ul style="list-style-type: none"> Research and development of crop breeds more resilient to drought Fund providing financing to small and medium enterprises (SMEs) to accelerate the development, application and transfer of adaptation solutions Levee system to protect a region including towns, businesses, infrastructure and agricultural land from the increased risk of flooding Introduction of crop breeds to increase small farmers' resilience to drought in a region with a high risk of precipitation, as part of an integrated agriculture project

10. The MDB adaptation finance tracking methodology centres on the understanding that adaptation is context- and location-specific. Adapting to climate change requires the use of a process-based approach to assess climate change vulnerabilities and identify the activities required to reduce such vulnerabilities. The following sections describe how this process-based approach is applied to different financial instruments to identify adaptation activities and estimate adaptation finance. Illustrative project examples of how the updated MDB adaptation finance tracking methodology is applied to different financial instruments are provided in Table A.B.1 of the full joint MDB climate finance report.

III. ESTIMATING ADAPTATION FINANCE IN INVESTMENT AND PROGRAMME LOANS AND GRANTS WITH KNOWN USE OF PROCEEDS

11. Investment loans and grants with known use of proceeds are financial instruments where the project's sectoral and geographical scope is typically known in advance.
12. In such financial instruments, the MDB methodology on adaptation finance tracking requires the following three key steps to identify adaptation activities:
 1. Setting out the project's context of vulnerability to climate change.
 2. Making an explicit statement of intent of the project to reduce the climate change vulnerabilities identified.
 3. Articulating a clear and direct link between specific project activities and the climate change vulnerability identified in Step 1.
13. Once adaptation activities are identified in a project, adaptation finance can be estimated using either an incremental or proportional approach. Figure 2 illustrates the process for applying the updated MDB adaptation finance tracking methodology to investment and programme loans and grants. The process is discussed in further detail below.

Figure 2: The multilateral development banks’ adaptation finance tracking process



Step 1. Context of vulnerability to climate change

14. For an activity to be considered an adaptation activity, the context of climate change vulnerability to experienced and anticipated impacts of climate change must first be set out clearly using a robust evidence base. Project documents may refer to existing analyses and reports or to original, bespoke assessments of climate change vulnerability.
15. Good practice in conducting original, bespoke analysis entails the use of information from trusted sources, which document the vulnerability of communities, physical assets and/or ecosystems to climate change, as well as the use of recent climate trends including any departures from historic means. These may be combined with climate change projections drawn from a range of climate model simulations, with high and low greenhouse gas emission scenarios, to explore the full range of projected impacts and uncertainties. Climate projection uncertainties should be presented and interpreted transparently. The timescale of projected climate change impacts should match the intended lifespan of the activities being financed through the project. For activities without clear lifespans (for example certain types of nature-based solutions or investments in operational expenses), an appropriate timescale of projected climate change impacts should be considered.

Step 2. Statement of intent

16. Once a project’s context of vulnerability to climate change has been established, the project documents should set out the explicit intention to address the identified climate change vulnerabilities. This is an important step to ensuring experienced and anticipated impacts of climate change are considered in a project.

17. The methodology is flexible about the way in which this intent is demonstrated, as long as the project does not exacerbate vulnerabilities beyond the project boundary or is not inconsistent with relevant adaptation strategies and plans such as national adaptation plans, nationally determined contributions and long-term strategies or other relevant policy documents. For example, the statement of intent could be reported in final technical documents, documents for MDB board approval, internal memos or other associated project documents.

Step 3. Clear and direct link between climate change vulnerability and project activities

18. In line with the principles of the overall MDB climate finance tracking, adaptation finance estimations consider only the finance allocated to specific project activities that are clearly linked to the context of climate change vulnerability identified in Step 1. Therefore, where possible, projects are disaggregated into discrete activities. Adaptation finance is attributed only to the activities that clearly respond to the context of climate change vulnerability. Each project activity can then be assessed as an adaptation activity or not relevant for adaptation. When it is not possible to break a project down into activities, the project should instead be treated as a whole.
19. Adaptation finance can be estimated using one of the following two approaches:
 - a. The *incremental approach* estimates the additional costs associated with the activities required to adapt the project to climate change against a hypothetical baseline where the project would aim to deliver expected results without addressing physical climate risks.
 - b. The *proportional approach* refers to adaptation finance estimated as a proportion of the MDB finance that corresponds to the adaptation activities included in a project. This may be informed by a range of credible sources including assessments of the cost of adaptation in similar operations or expert knowledge on the relevant sectoral practice, together with information on the assumptions and calculations used. The multilateral development banks will continue to share and exchange knowledge on the criteria that may be used to inform the use of the proportional approach.
20. For type 1 and type 2 activities, adaptation finance is less than 100% of the activity cost. Adaptation finance is estimated using an incremental approach or a proportional approach.
21. For type 3 activities, adaptation finance is 100% of the activity cost because such activities are motivated by the need to address experienced and anticipated impacts of climate change.

IV. ESTIMATING ADAPTATION FINANCE IN OTHER FINANCIAL INSTRUMENTS

22. Since 2012, the multilateral development banks have diversified and grown their offering of financial products in order to serve the needs of their clients and as a result of advances in the field of sustainable finance. In addition to financial instruments such as investment and programme loans and grants, multilateral development banks have also increasingly provided adaptation finance through other financing instruments such as lines of credit, guarantees, equity, policy-based financing and results-based financing
23. This section provides an initial framework to track adaptation finance in policy-based financing, working capital and intermediated financing. Adaptation finance attribution for these instruments is still based on the three-step approach, which has been further clarified to reflect the nature of these financial instruments.
24. The multilateral development banks will continue to work together and with other financial institutions to further develop approaches for tracking adaptation finance in other financial instruments, such as guarantees, equity and results-based financing.

Policy-based financing

25. Policy-based financing supports national and subnational programmes of policy reforms and institutional actions that promote growth, poverty reduction and sustainable development. Financing is made available as non-earmarked general budget financing upon satisfactory implementation of the overall policy and institutional reform programme, which includes a set of critical policy actions.
26. The policy actions supported through policy-based financing are defined and agreed upon between the MDB and the recipient government in advance and are outlined in the project documents. Policy actions may be fully dedicated to addressing climate change vulnerabilities and contributing to climate change adaptation or may be designed to simultaneously support other development objectives.
27. The MDB methodology on tracking adaptation finance in policy-based financing identifies adaptation activities using the following three steps:
 - a. *Context of vulnerability*: The operation clearly sets out the context of climate change vulnerability using a robust evidence base, and adaptation activities that are required to strengthen the recipient's policy and institutional framework.
 - b. *Intent*: The operation supports the recipient to identify policy actions that can contribute to adaptation and sets out the explicit intention to develop such policy actions consistent with the context of vulnerability and in line with relevant adaptation strategies and plans.
 - c. *Clear and direct link between climate change vulnerability context and policy actions*: The policy actions included in the MDB operation directly contribute to addressing the identified climate change vulnerabilities and/or enabling adaptation.
28. If these three criteria are met, climate adaptation finance is estimated at the policy action level and using a proportional approach. Adaptation finance is allocated to each policy action that articulates a clear and direct link between the climate change vulnerability context and the specific policy action.

Working capital

29. Working capital is finance provided by a multilateral development bank to an entity for operational expenditures. Working capital is considered to contribute to adaptation if it leads to, enables or supports the implementation and operation of adaptation activities.
30. The MDB methodology on tracking adaptation finance in working capital identifies adaptation activities using the following three steps:
 - a. *Context of vulnerability*: The context of climate change vulnerability has been clearly set out for the recipient's business model or stakeholders of influence.
 - b. *Statement of intent*: The recipient conducts adaptation activities, has sustainability certifications that require practices associated with reducing climate change vulnerability, and/or produces products or provides services that enable adaptation.
 - c. *Capacity of the recipient*: The recipient has the institutional capacity to report on related adaptation activities, sustainability certifications that include adaptation practices, and/or information related to products or services that enable adaptation, or otherwise commits to strengthen that capacity.
31. If these three criteria are met, then the adaptation finance is estimated as the finance associated with the adaptation activities included in the business model of the recipient using a proportional approach or incremental approach. The estimate is based on the operational expenditures associated with the adaptation activities.

Intermediated financing

32. Intermediated financing is financing that multilateral development banks provide through banks, non-banking financial institutions, funds or other financial intermediaries.
33. For intermediated operations, there is often high level of uncertainty on the use of proceeds in advance. In this case, estimating adaptation finance relies on a robust understanding of the activities that can contribute to adaptation within the geographical and sectoral scope of the MDB transaction, and the capacity of the recipient to utilise this information to scope, implement and monitor these activities.
34. When the use of proceeds is defined, the MDB methodology on tracking adaptation finance in intermediated financing identifies adaptation activities using the following three criteria:
 - a. *Context of vulnerability*: The recipient has an understanding of climate change vulnerabilities and adaptation activities within the geographical and sectoral scope of the MDB transaction, based on existing national/regional/local adaptation plans, other relevant information sources or an assessment developed by the multilateral development bank.
 - b. *Statement of intent*: The recipient has a preliminary project pipeline or an initial list of activities covering the scope of the MDB transaction. In the event such a pipeline does not exist, the intermediary undertakes to develop and deliver such a pipeline. In both cases, such a pipeline contributes to reducing climate change vulnerabilities and does not undermine relevant adaptation strategies and plans. This commitment is reflected in the financing agreement and is realised by the time the MDB finance is fully utilised.
 - c. *Capacity of the recipient*: The recipient has the institutional capacity to identify and report on adaptation activities, or otherwise commits to strengthen that capacity. Evidence of this capacity could include dedicated responsibility for climate change adaptation, a climate risk management system, the disclosure of physical climate risk, or other evidence of processes that can support the identification of physical climate risk and adaptation activities.
35. If these three criteria are met, the multilateral development bank may determine the adaptation finance as follows:
 - a. When the use of proceeds is known, adaptation finance is estimated as the percentage of finance associated with adaptation activities included in the initial project pipeline.
 - b. When the use of proceeds is undefined — for example if a project pipeline is still being developed at the time of project approval or in the case of a general credit line — the multilateral development bank may estimate adaptation finance using a projected allocation to activities that contribute to adaptation, as committed in the financing agreement. The projected allocation can be based on the percentage of the recipient's existing investment portfolio financing adaptation activities at the moment of the MDB's transaction, a client survey or a market assessment. The multilateral development bank will periodically verify actual disbursements to inform future similar operations.



European Investment Bank
98-100, boulevard Konrad Adenauer
L-2950 Luxembourg
+352 4379-22000
www.eib.org – info@eib.org